



Dulwich Road, Herne Hill, SE24

3 bedroom flat - conversion for sale

£925,000

Share of Freehold

Property Details

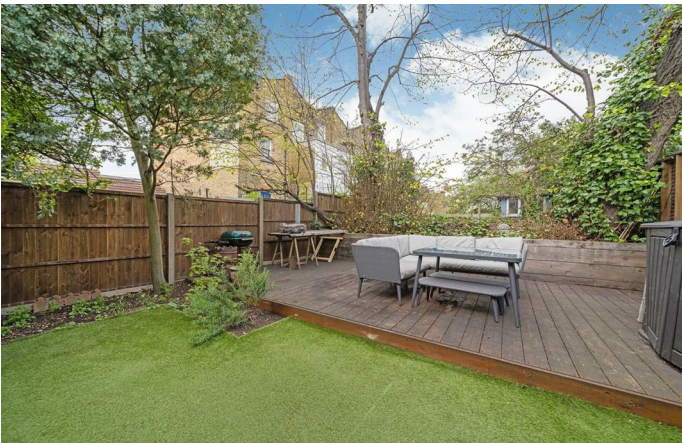
An impressive three double bedroom, three bathroom split-level flat with a garden on Dulwich Road. This outstanding property will appeal due to the significant dimensions, large garden, fantastic features and handsome setting. A sense of Victorian grandeur can be found as you enter the expansive reception room, measuring over eight meters in length this extraordinary space boasts wooden flooring, high ceilings, original cornicing, two characterful fireplaces and flooded with natural light from front bay and rear doors, complete with original shutters. Nestled to the rear is a separate kitchen with a rustic country styling and leafy views over the garden from dual aspect windows. Similar garden views are enjoyed from the dining area, beyond which the patio doors open to a balcony with steps leading down to the private garden, this green space is blessed with additional sun and privacy due to the configuration of surrounding buildings. Downstairs is equally as impressive, all three bedrooms are generous doubles, two of which enjoy en-suites, with one bedroom also boasting double doors out to the garden. The third and main bathroom is the epitome of luxury. Early registration of interest is strongly advised.

Features

- Three double bedrooms
- Three bathrooms
- Victorian conversion
- Sixty foot private garden
- Over 1,200 square feet of internal living space
- Brockwell Park opposite
- Herne Hill station a five-minute walk
- Brixton centre a twelve-minute stroll
- Access to Thameslink and Victoria line
- Chain-free and share of freehold

Council tax band D

EPC rating D (68)

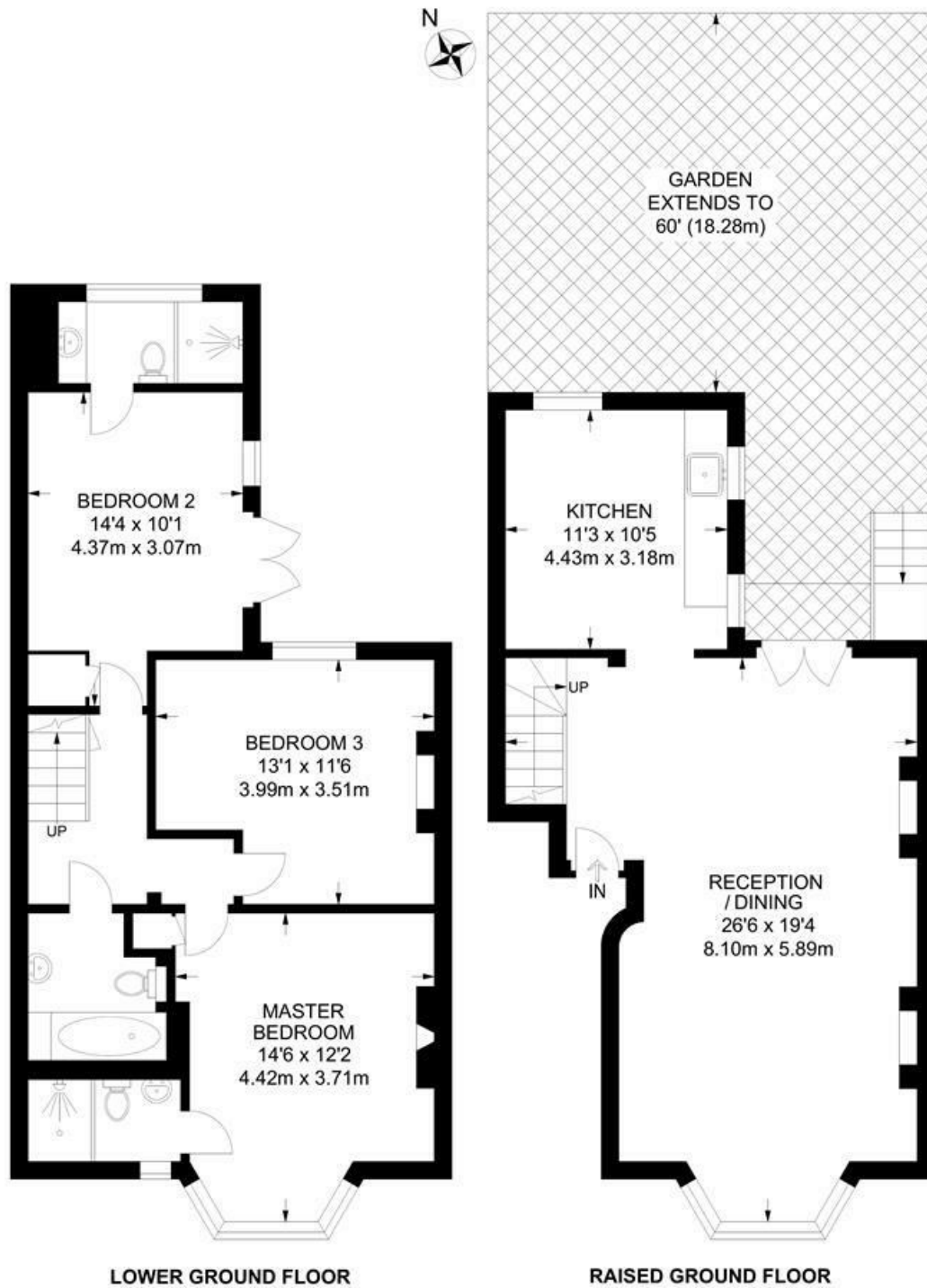




Dulwich Road, Herne Hill, SE24

Dulwich Road, SE24
3 Bedroom Flat

APPROXIMATE TOTAL INTERNAL AREA: 1206 SQ FT / 112 SQ M



While we try our very best, floor plans are produced as a guide only and we take no responsibility for the precise accuracy with which any property is represented.

Dulwich Road, Herne Hill, SE24

